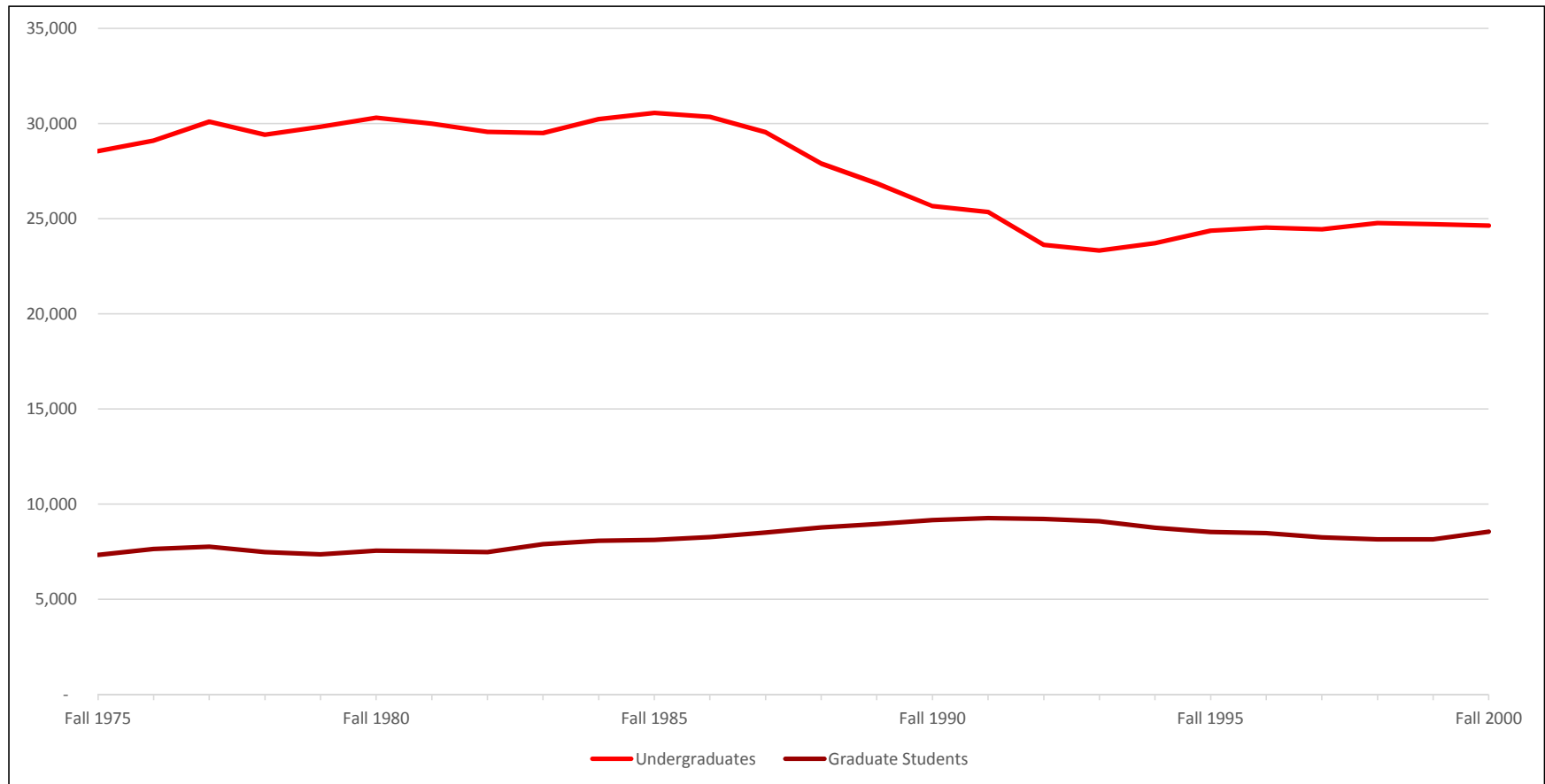


Undergraduate and Graduate Student Enrollments: Fall 1975 - Fall 2000

	Fall 1975	Fall 1976	Fall 1977	Fall 1978	Fall 1979	Fall 1980	Fall 1981	Fall 1982	Fall 1983	Fall 1984	Fall 1985	Fall 1986	Fall 1987
Undergraduates	28,561	29,112	30,108	29,422	29,835	30,314	30,002	29,564	29,510	30,231	30,556	30,362	29,549
Graduate Students	7,329	7,649	7,758	7,483	7,357	7,550	7,526	7,482	7,903	8,076	8,123	8,277	8,509
Total Students	35,890	36,761	37,866	36,905	37,192	37,864	37,528	37,046	37,413	38,307	38,679	38,639	38,058

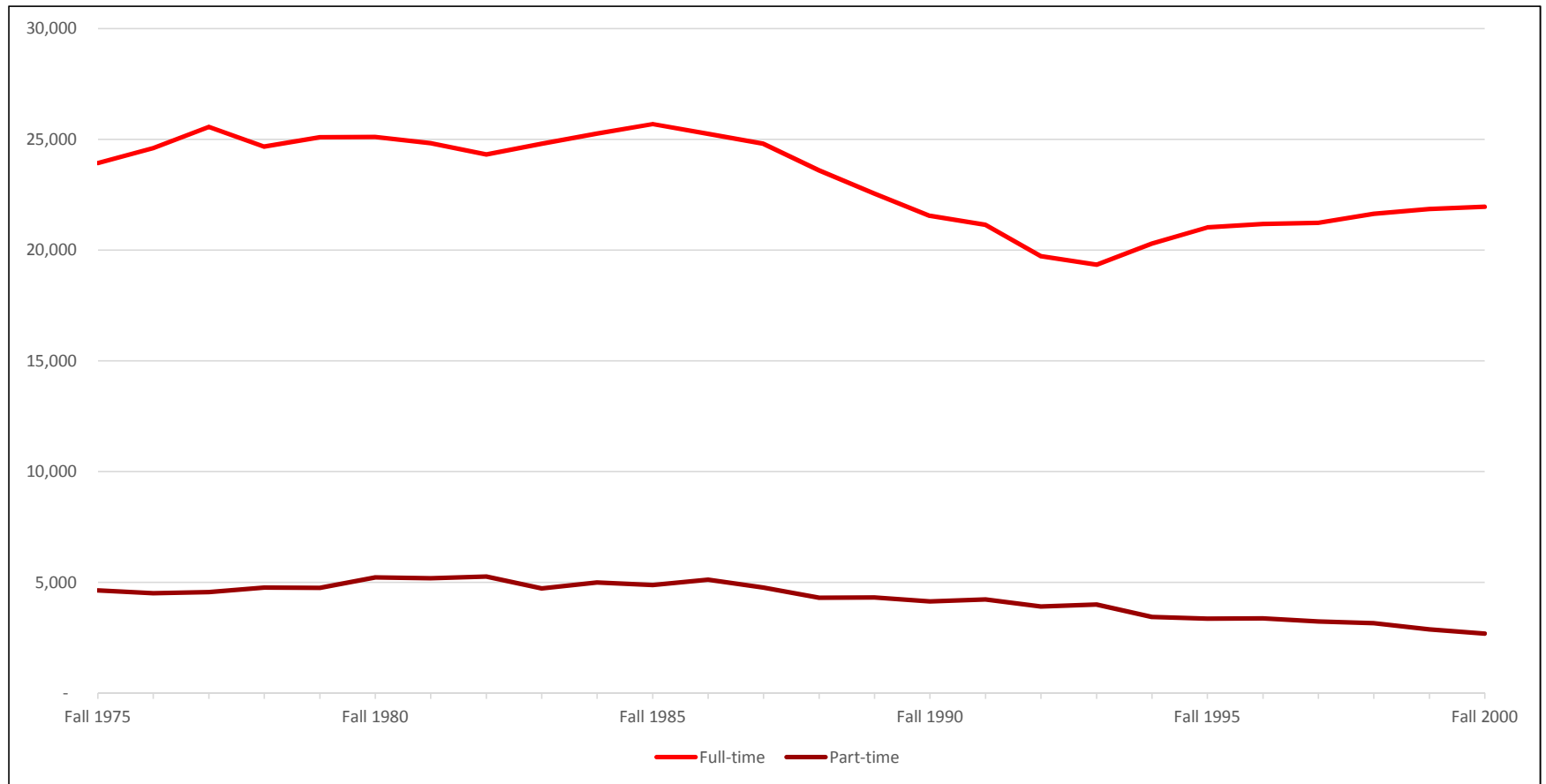
	Fall 1988	Fall 1989	Fall 1990	Fall 1991	Fall 1992	Fall 1993	Fall 1994	Fall 1995	Fall 1996	Fall 1997	Fall 1998	Fall 1999	Fall 2000
Undergraduates	27,902	26,863	25,671	25,361	23,630	23,331	23,724	24,373	24,529	24,454	24,776	24,717	24,638
Graduate Students	8,779	8,962	9,166	9,262	9,228	9,110	8,769	8,535	8,477	8,257	8,149	8,147	8,551
Total Students	36,681	35,825	34,837	34,623	32,858	32,441	32,493	32,908	33,006	32,711	32,925	32,864	33,189



Undergraduate Enrollments by Full-time/Part-time Status: Fall 1975 - Fall 2000

	Fall 1975	Fall 1976	Fall 1977	Fall 1978	Fall 1979	Fall 1980	Fall 1981	Fall 1982	Fall 1983	Fall 1984	Fall 1985	Fall 1986	Fall 1987
Full-time	23,932	24,605	25,560	24,664	25,092	25,100	24,822	24,305	24,797	25,250	25,686	25,246	24,795
Part-time	4,629	4,507	4,548	4,758	4,743	5,214	5,180	5,259	4,713	4,981	4,870	5,116	4,754
Total Students	28,561	29,112	30,108	29,422	29,835	30,314	30,002	29,564	29,510	30,231	30,556	30,362	29,549

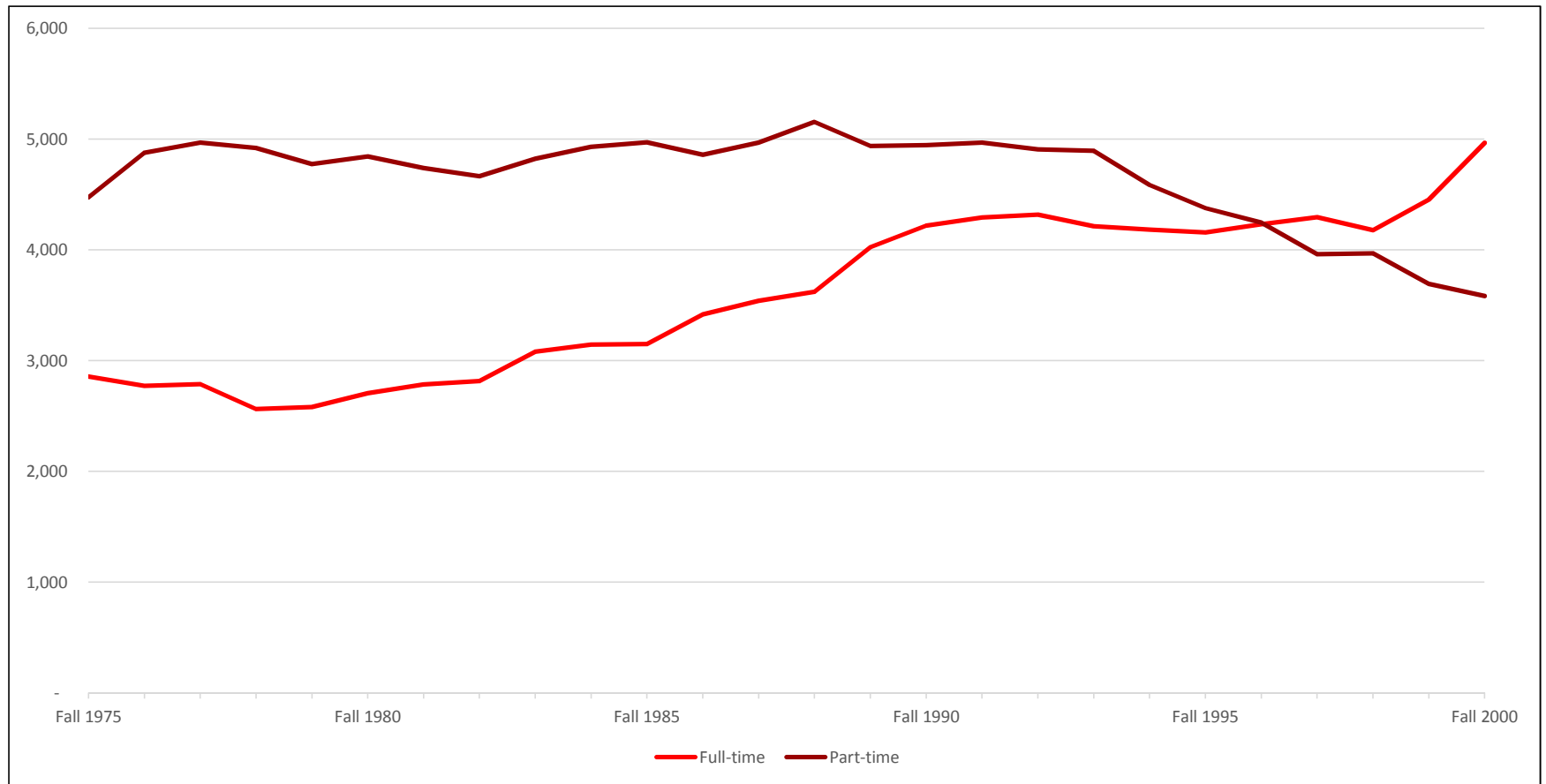
	Fall 1988	Fall 1989	Fall 1990	Fall 1991	Fall 1992	Fall 1993	Fall 1994	Fall 1995	Fall 1996	Fall 1997	Fall 1998	Fall 1999	Fall 2000
Full-time	23,598	22,553	21,543	21,136	19,720	19,340	20,296	21,022	21,167	21,224	21,630	21,845	21,951
Part-time	4,304	4,310	4,128	4,225	3,909	3,991	3,428	3,351	3,362	3,230	3,146	2,872	2,687
Total Students	27,902	26,863	25,671	25,361	23,629	23,331	23,724	24,373	24,529	24,454	24,776	24,717	24,638



Graduate Student Enrollments by Full-time/Part-time Status: Fall 1975 - Fall 2000

	Fall 1975	Fall 1976	Fall 1977	Fall 1978	Fall 1979	Fall 1980	Fall 1981	Fall 1982	Fall 1983	Fall 1984	Fall 1985	Fall 1986	Fall 1987
Full-time	2,856	2,772	2,789	2,563	2,581	2,706	2,786	2,816	3,080	3,146	3,151	3,418	3,540
Part-time	4,473	4,877	4,969	4,920	4,776	4,844	4,740	4,666	4,823	4,930	4,972	4,859	4,969
Total Students	7,329	7,649	7,758	7,483	7,357	7,550	7,526	7,482	7,903	8,076	8,123	8,277	8,509

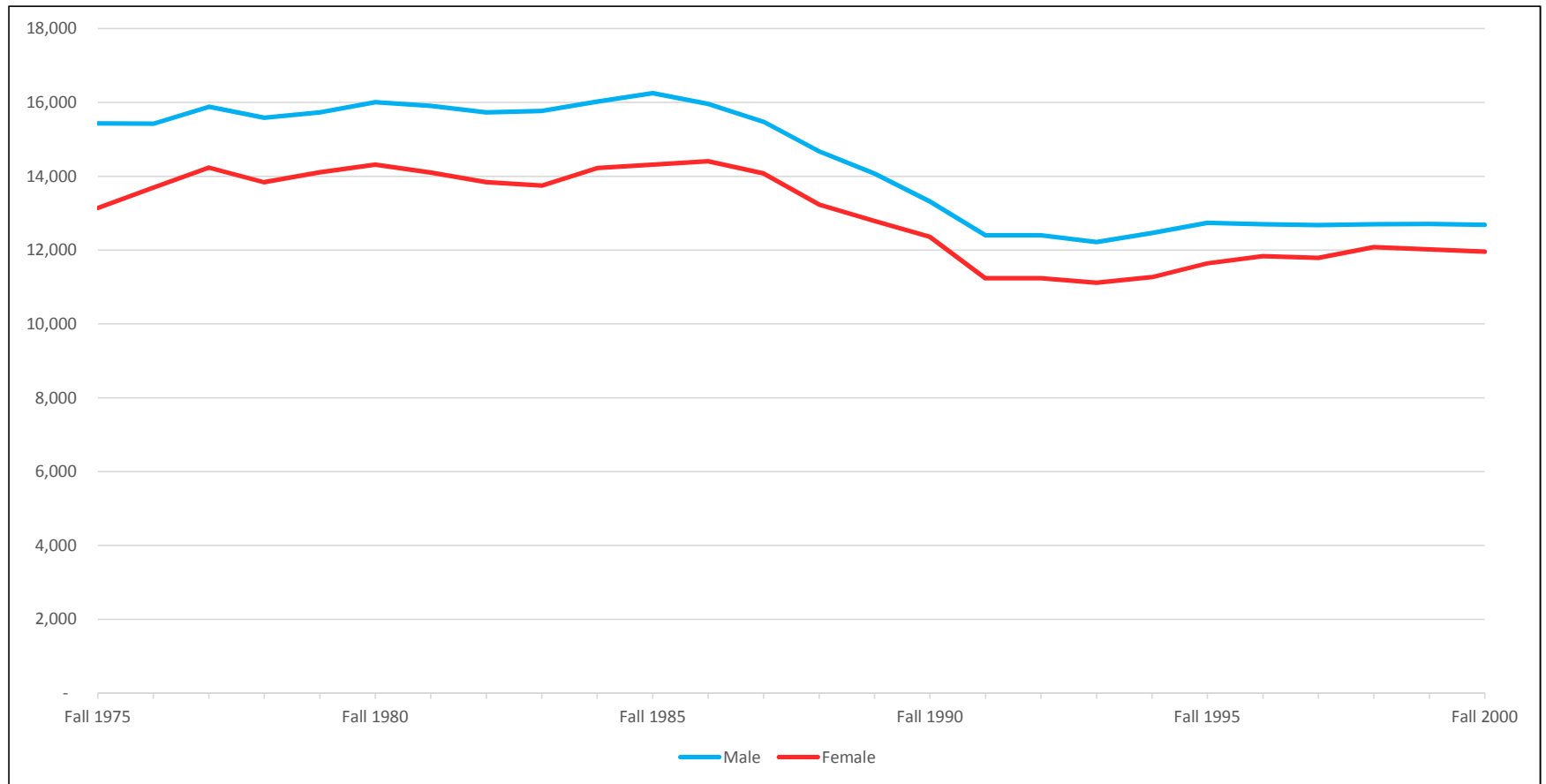
	Fall 1988	Fall 1989	Fall 1990	Fall 1991	Fall 1992	Fall 1993	Fall 1994	Fall 1995	Fall 1996	Fall 1997	Fall 1998	Fall 1999	Fall 2000
Full-time	3,623	4,024	4,220	4,293	4,319	4,215	4,183	4,158	4,231	4,296	4,179	4,454	4,966
Part-time	5,156	4,938	4,946	4,969	4,909	4,895	4,586	4,377	4,246	3,961	3,970	3,693	3,585
Total Students	8,779	8,962	9,166	9,262	9,228	9,110	8,769	8,535	8,477	8,257	8,149	8,147	8,551



Undergraduate Enrollments by Gender: Fall 1975 - Fall 2000

	Fall 1975	Fall 1976	Fall 1977	Fall 1978	Fall 1979	Fall 1980	Fall 1981	Fall 1982	Fall 1983	Fall 1984	Fall 1985	Fall 1986	Fall 1987
Male	15,425	15,424	15,877	15,583	15,730	16,004	15,903	15,728	15,763	16,015	16,247	15,955	15,473
Female	13,136	13,688	14,231	13,839	14,105	14,310	14,099	13,836	13,747	14,216	14,309	14,407	14,076
Total Students	28,561	29,112	30,108	29,422	29,835	30,314	30,002	29,564	29,510	30,231	30,556	30,362	29,549

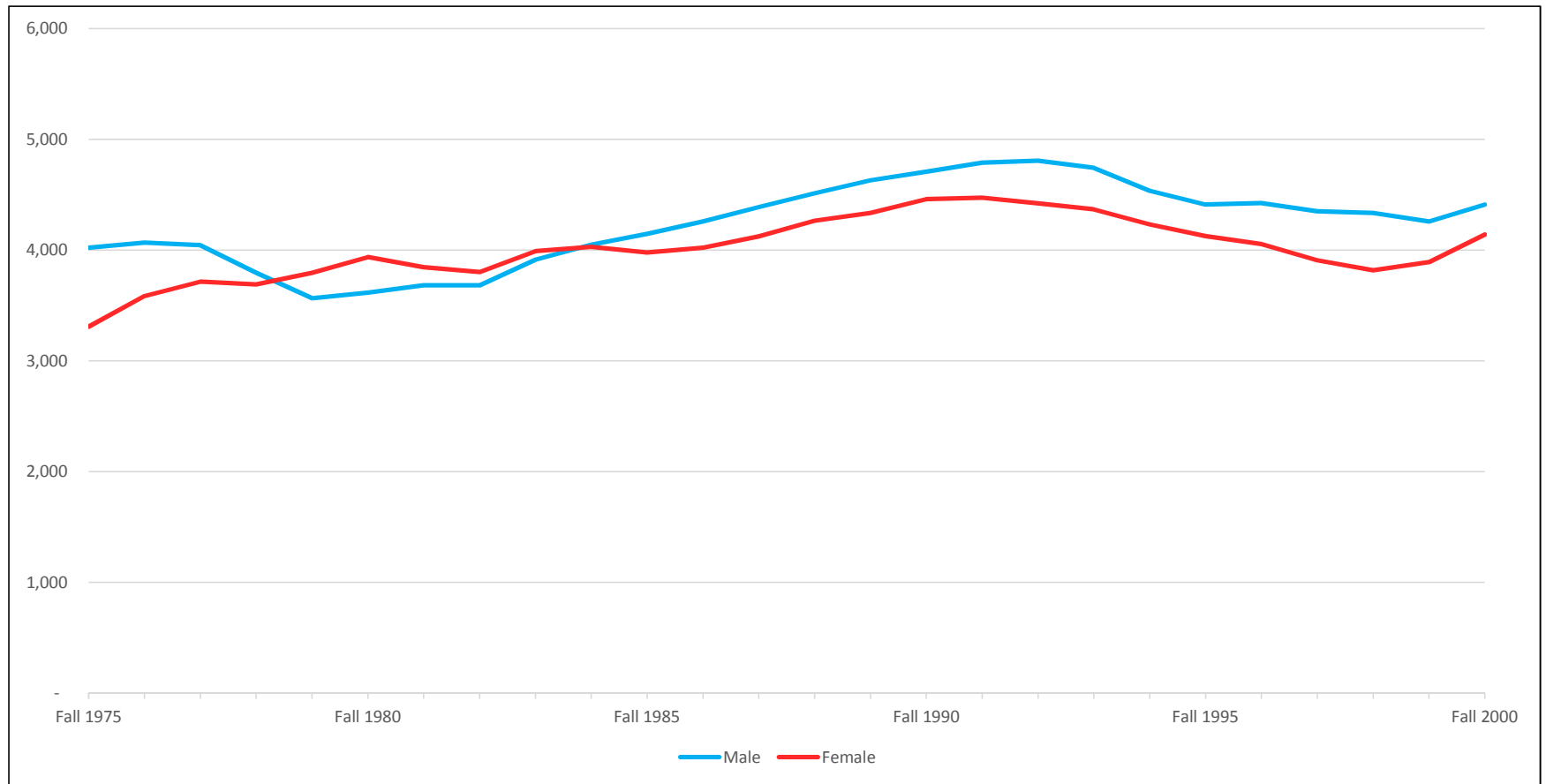
	Fall 1988	Fall 1989	Fall 1990	Fall 1991	Fall 1992	Fall 1993	Fall 1994	Fall 1995	Fall 1996	Fall 1997	Fall 1998	Fall 1999	Fall 2000
Male	14,673	14,073	13,315	12,395	12,395	12,215	12,457	12,734	12,696	12,670	12,699	12,704	12,684
Female	13,229	12,790	12,356	11,235	11,234	11,116	11,267	11,639	11,833	11,784	12,077	12,013	11,954
Total Students	27,902	26,863	25,671	23,630	23,629	23,331	23,724	24,373	24,529	24,454	24,776	24,717	24,638



Graduate Student Enrollments by Gender: Fall 1975 - Fall 2000

	Fall 1975	Fall 1976	Fall 1977	Fall 1978	Fall 1979	Fall 1980	Fall 1981	Fall 1982	Fall 1983	Fall 1984	Fall 1985	Fall 1986	Fall 1987
Male	4,021	4,066	4,043	3,795	3,565	3,615	3,681	3,682	3,913	4,049	4,145	4,257	4,387
Female	3,308	3,583	3,715	3,688	3,792	3,935	3,845	3,800	3,990	4,027	3,978	4,020	4,122
Total Students	7,329	7,649	7,758	7,483	7,357	7,550	7,526	7,482	7,903	8,076	8,123	8,277	8,509

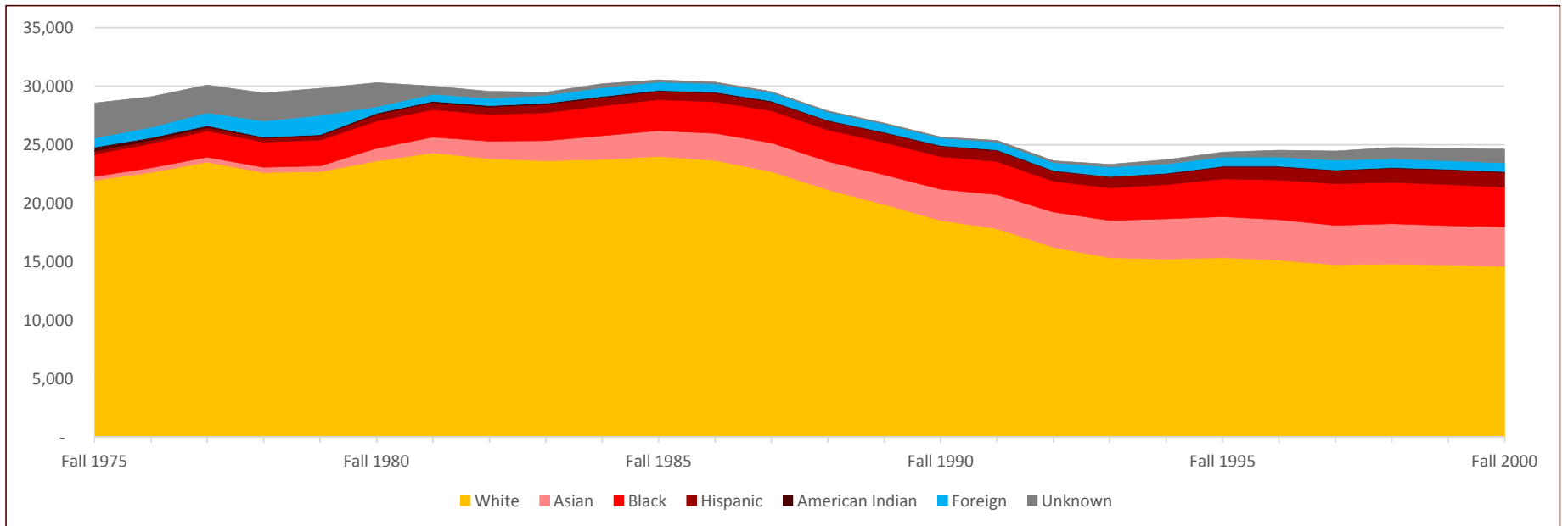
	Fall 1988	Fall 1989	Fall 1990	Fall 1991	Fall 1992	Fall 1993	Fall 1994	Fall 1995	Fall 1996	Fall 1997	Fall 1998	Fall 1999	Fall 2000
Male	4,513	4,629	4,707	4,789	4,807	4,742	4,536	4,411	4,423	4,349	4,333	4,258	4,410
Female	4,266	4,333	4,459	4,473	4,421	4,368	4,233	4,124	4,054	3,908	3,816	3,889	4,141
Total Students	8,779	8,962	9,166	9,262	9,228	9,110	8,769	8,535	8,477	8,257	8,149	8,147	8,551



Undergraduate Enrollments by Race/Ethnicity: Fall 1975 - Fall 2000

	Fall 1975	Fall 1976	Fall 1977	Fall 1978	Fall 1979	Fall 1980	Fall 1981	Fall 1982	Fall 1983	Fall 1984	Fall 1985	Fall 1986	Fall 1987
Asian	345	395	420	438	488	1,097	1,352	1,472	1,723	2,016	2,215	2,318	2,453
Black	1,896	2,074	2,247	2,165	2,206	2,307	2,342	2,278	2,373	2,551	2,633	2,696	2,735
Hispanic	268	277	286	314	344	555	604	638	704	702	701	736	751
American Indian	337	233	155	104	110	117	103	119	127	117	98	93	95
White	21,948	22,630	23,508	22,634	22,704	23,610	24,303	23,822	23,630	23,755	23,993	23,651	22,708
Foreign	795	877	1,119	1,360	1,645	569	622	632	670	721	714	736	716
Unknown	2,972	2,626	2,373	2,407	2,338	2,059	676	603	283	369	202	132	91
Total Students	28,561	29,112	30,108	29,422	29,835	30,314	30,002	29,564	29,510	30,231	30,556	30,362	29,549

	Fall 1988	Fall 1989	Fall 1990	Fall 1991	Fall 1992	Fall 1993	Fall 1994	Fall 1995	Fall 1996	Fall 1997	Fall 1998	Fall 1999	Fall 2000
Asian	2,423	2,535	2,672	2,899	3,024	3,191	3,425	3,497	3,446	3,365	3,433	3,356	3,390
Black	2,700	2,750	2,795	2,821	2,625	2,773	2,925	3,218	3,401	3,545	3,527	3,509	3,403
Hispanic	770	828	870	915	856	893	926	1,025	1,105	1,133	1,218	1,251	1,234
American Indian	71	74	74	78	73	71	59	69	60	61	59	69	67
White	21,134	19,888	18,513	17,835	16,214	15,342	15,228	15,351	15,142	14,745	14,803	14,727	14,596
Foreign	719	687	654	677	683	823	799	802	808	817	765	716	753
Unknown	85	101	93	136	155	238	362	411	567	788	971	1,089	1,195
Total Students	27,902	26,863	25,671	25,361	23,630	23,331	23,724	24,373	24,529	24,454	24,776	24,717	24,638



Graduate Student Enrollments by Race/Ethnicity: Fall 1975 - Fall 2000

	Fall 1975	Fall 1976	Fall 1977	Fall 1978	Fall 1979	Fall 1980	Fall 1981	Fall 1982	Fall 1983	Fall 1984	Fall 1985	Fall 1986	Fall 1987
Asian	62	52	92	83	81	131	176	166	189	223	266	273	281
Black	334	369	447	409	456	529	504	467	466	482	467	446	495
Hispanic	61	67	84	74	78	109	141	125	124	152	153	142	126
American Indian	42	33	24	26	16	15	21	36	30	21	20	18	11
White	5,250	5,322	6,174	5,669	5,528	5,708	5,865	5,781	6,038	5,962	5,869	5,901	5,986
Foreign	496	545	520	573	658	539	652	772	932	1,070	1,206	1,346	1,451
Unknown	1,084	1,261	417	649	540	519	167	135	124	166	142	151	159
Total Students	7,329	7,649	7,758	7,483	7,357	7,550	7,526	7,482	7,903	8,076	8,123	8,277	8,509

	Fall 1988	Fall 1989	Fall 1990	Fall 1991	Fall 1992	Fall 1993	Fall 1994	Fall 1995	Fall 1996	Fall 1997	Fall 1998	Fall 1999	Fall 2000
Asian	305	315	342	349	368	427	540	471	463	455	453	408	425
Black	456	498	552	617	612	639	632	634	659	598	616	616	673
Hispanic	115	128	143	168	174	154	174	181	196	193	191	189	197
American Indian	15	14	12	16	25	26	33	45	40	31	29	28	23
White	6,155	6,150	6,134	6,036	6,003	5,777	5,549	5,291	5,145	4,882	4,664	4,533	4,592
Foreign	1,576	1,710	1,845	1,887	1,875	1,864	1,685	1,742	1,783	1,865	1,922	2,092	2,299
Unknown	157	147	138	189	171	223	156	171	191	233	274	281	342
Total Students	8,779	8,962	9,166	9,262	9,228	9,110	8,769	8,535	8,477	8,257	8,149	8,147	8,551

