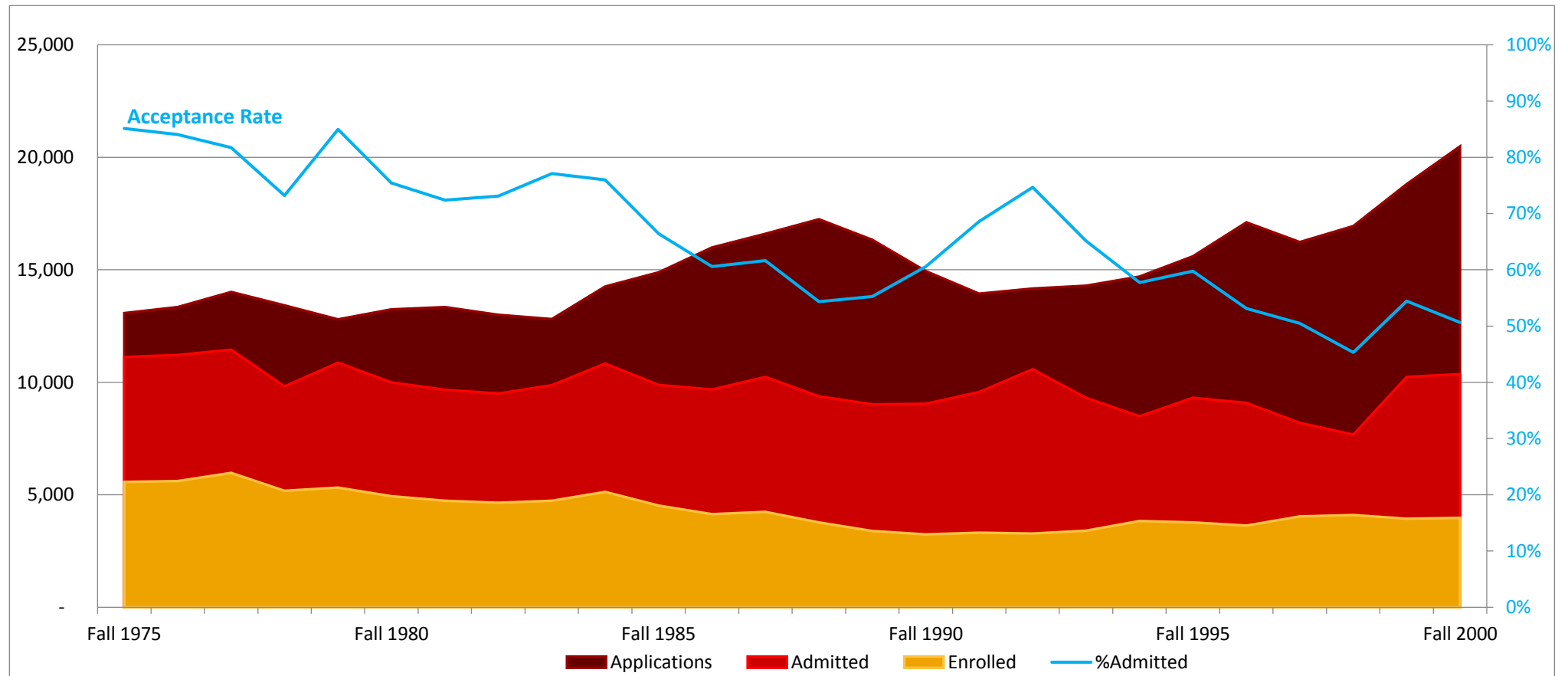


Undergraduate Applications - New First-Time Freshman Fall 1975 - Fall 2000

	Fall 1975	Fall 1976	Fall 1977	Fall 1978	Fall 1979	Fall 1980	Fall 1981	Fall 1982	Fall 1983	Fall 1984	Fall 1985	Fall 1986	Fall 1987
Applications	13,076	13,345	14,014	13,422	12,804	13,245	13,349	12,999	12,809	14,252	14,887	15,988	16,605
Admitted	11,131	11,217	11,450	9,822	10,877	9,992	9,663	9,500	9,876	10,833	9,886	9,681	10,238
%Admitted	85%	84%	82%	73%	85%	75%	72%	73%	77%	76%	66%	61%	62%
Enrolled	5,577	5,615	5,974	5,176	5,325	4,942	4,730	4,651	4,733	5,133	4,522	4,145	4,238
%Enrolled	50%	50%	52%	53%	49%	49%	49%	49%	48%	47%	46%	43%	41%

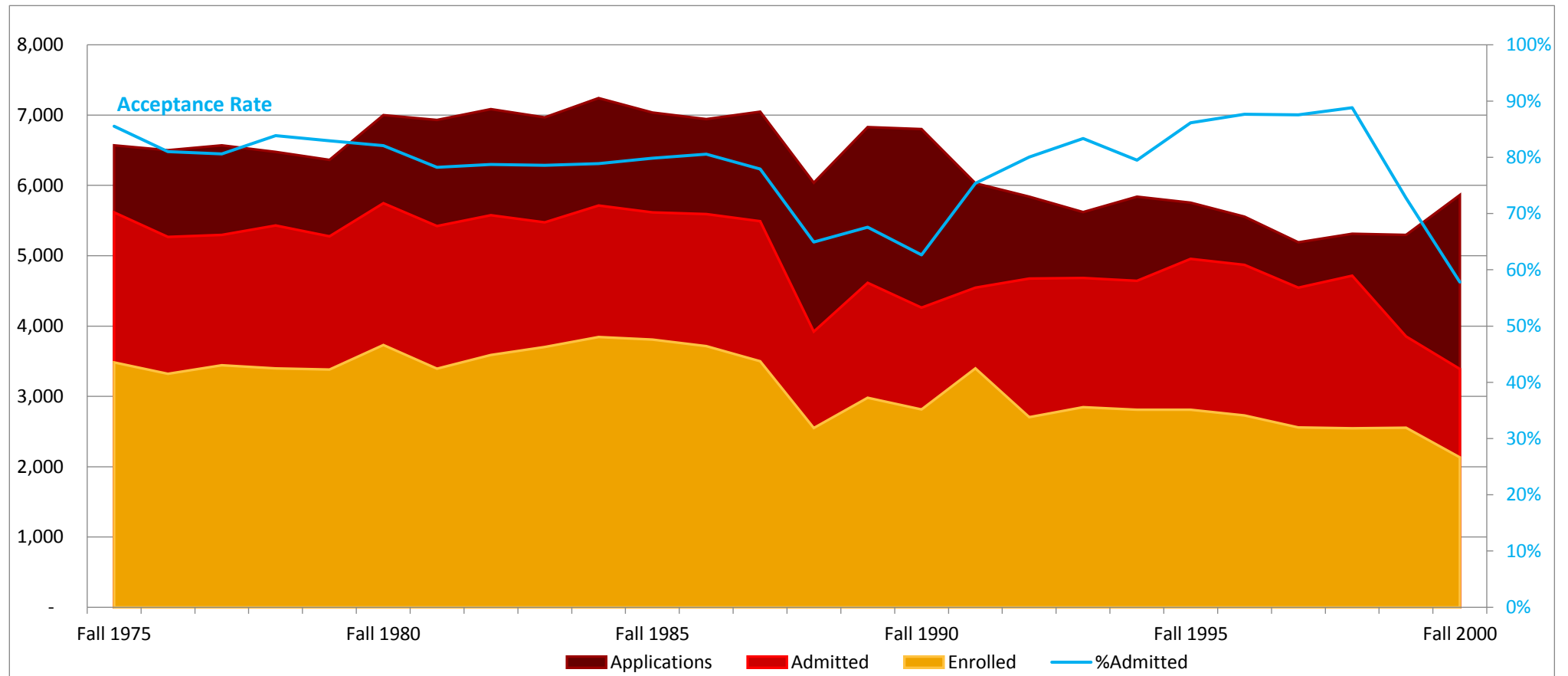
	Fall 1988	Fall 1989	Fall 1990	Fall 1991	Fall 1992	Fall 1993	Fall 1994	Fall 1995	Fall 1996	Fall 1997	Fall 1998	Fall 1999	Fall 2000
Applications	17,248	16,332	14,942	13,945	14,162	14,291	14,699	15,594	17,112	16,229	16,946	18,808	20,488
Admitted	9,370	9,024	9,049	9,561	10,576	9,312	8,487	9,317	9,090	8,196	7,678	10,241	10,370
%Admitted	54%	55%	61%	69%	75%	65%	58%	60%	53%	51%	45%	54%	51%
Enrolled	3,774	3,388	3,241	3,313	3,282	3,409	3,838	3,767	3,638	4,033	4,105	3,937	3,980
%Enrolled	40%	38%	36%	35%	31%	37%	45%	40%	40%	49%	53%	38%	38%



Undergraduate Applications - New Transfer Students Fall 1975 - Fall 2000

	Fall 1975	Fall 1976	Fall 1977	Fall 1978	Fall 1979	Fall 1980	Fall 1981	Fall 1982	Fall 1983	Fall 1984	Fall 1985	Fall 1986	Fall 1987
Applications	6,569	6,502	6,571	6,477	6,361	7,001	6,932	7,084	6,969	7,242	7,036	6,943	7,048
Admitted	5,617	5,266	5,297	5,431	5,276	5,747	5,421	5,577	5,476	5,713	5,617	5,594	5,492
%Admitted	86%	81%	81%	84%	83%	82%	78%	79%	79%	79%	80%	81%	78%
Enrolled	3,484	3,319	3,442	3,396	3,380	3,730	3,392	3,587	3,702	3,844	3,806	3,714	3,500
%Enrolled	62%	63%	65%	63%	64%	65%	63%	64%	68%	67%	68%	66%	64%

	Fall 1988	Fall 1989	Fall 1990	Fall 1991	Fall 1992	Fall 1993	Fall 1994	Fall 1995	Fall 1996	Fall 1997	Fall 1998	Fall 1999	Fall 2000
Applications	6,038	6,830	6,800	6,032	5,840	5,620	5,841	5,754	5,556	5,192	5,312	5,297	5,864
Admitted	3,922	4,616	4,261	4,546	4,674	4,683	4,644	4,956	4,869	4,545	4,718	3,852	3,390
%Admitted	65%	68%	63%	75%	80%	83%	80%	86%	88%	88%	89%	73%	58%
Enrolled	2,551	2,978	2,813	3,396	2,704	2,846	2,809	2,810	2,729	2,557	2,547	2,552	2,134
%Enrolled	65%	65%	66%	75%	58%	61%	60%	57%	56%	56%	54%	66%	63%



Undergraduate Applications - All Undergraduates Fall 1975 - Fall 2000

	Fall 1975	Fall 1976	Fall 1977	Fall 1978	Fall 1979	Fall 1980	Fall 1981	Fall 1982	Fall 1983	Fall 1984	Fall 1985	Fall 1986	Fall 1987
Applications	19,645	19,847	20,585	19,899	19,165	20,246	20,281	20,083	19,778	21,494	21,923	22,931	23,653
Admitted	16,748	16,483	16,747	15,253	16,153	15,739	15,084	15,077	15,352	16,546	15,503	15,275	15,730
%Admitted	85%	83%	81%	77%	84%	78%	74%	75%	78%	77%	71%	67%	67%
Enrolled	9,061	8,934	9,416	8,572	8,705	8,672	8,122	8,238	8,435	8,977	8,328	7,859	7,738
%Enrolled	54%	54%	56%	56%	54%	55%	54%	55%	55%	54%	54%	51%	49%

	Fall 1988	Fall 1989	Fall 1990	Fall 1991	Fall 1992	Fall 1993	Fall 1994	Fall 1995	Fall 1996	Fall 1997	Fall 1998	Fall 1999	Fall 2000
Applications	23,286	23,162	21,742	19,977	20,002	19,911	20,540	21,348	22,668	21,421	22,258	24,105	26,352
Admitted	13,282	13,640	13,310	14,107	15,250	13,995	13,131	14,273	13,959	12,741	12,396	14,093	13,760
%Admitted	57%	59%	61%	71%	76%	70%	64%	67%	62%	59%	56%	58%	52%
Enrolled	6,325	6,366	6,054	6,709	5,986	6,255	6,647	6,577	6,367	6,590	6,652	6,489	6,114
%Enrolled	48%	47%	45%	48%	39%	45%	51%	46%	46%	52%	54%	46%	44%

